



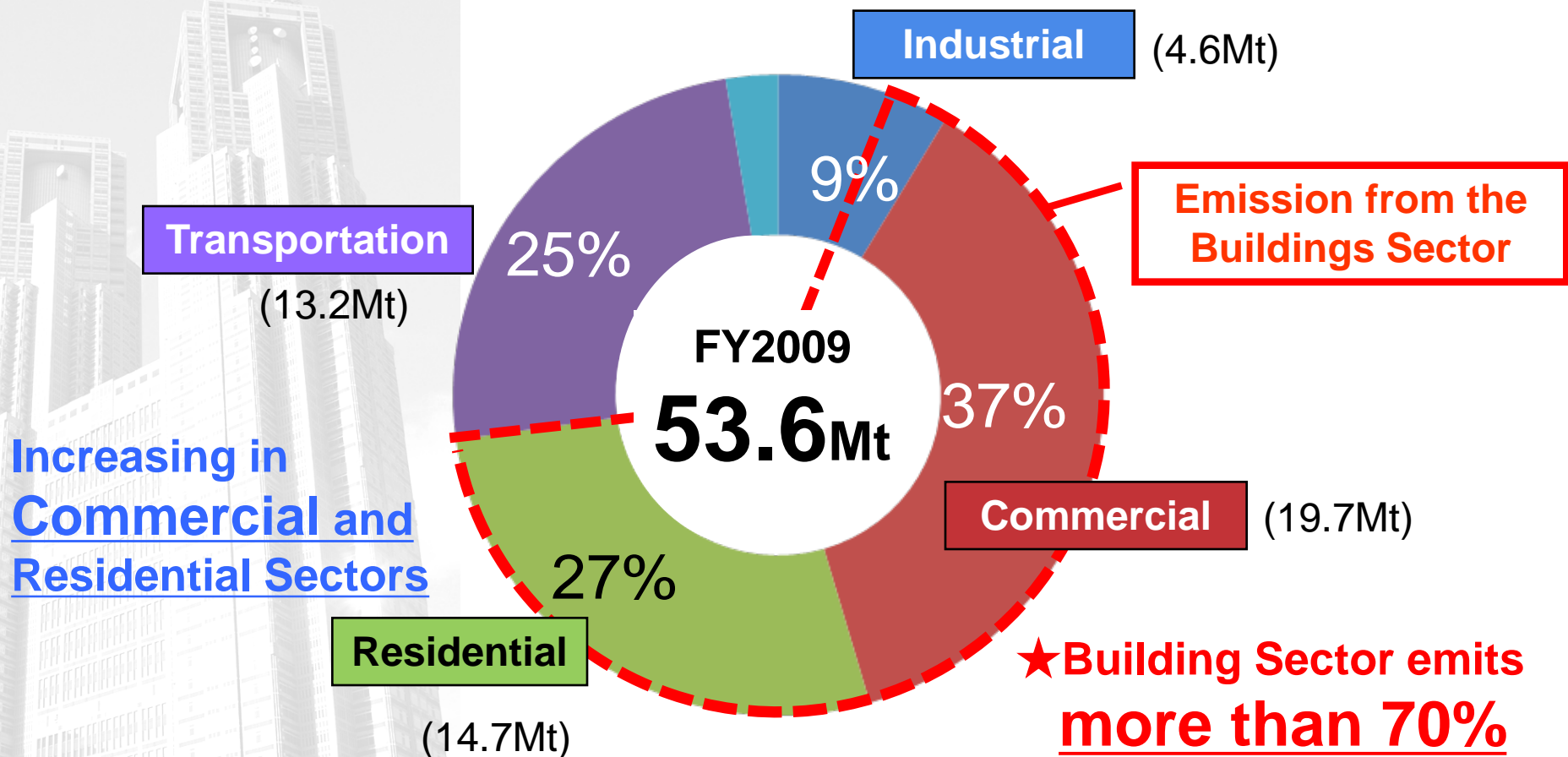
# *Tokyo Solutions for Environmentally Sustainable City*

*Regulative method and Market Mechanism*



Kenji Suzuki  
Bureau of Environment  
Tokyo Metropolitan Government

# CO2 Emissions by Sectors (2009)



Increasing in Commercial and Residential Sectors

★ **Reducing emissions from buildings is the problem to address !**

# Tokyo Solutions

## Solutions for Buildings

### Transportation

- ◆ Vehicle Emissions Reduction Program
- ◆ Truck Benchmarking

### Residential

- ◆ Energy Saving Advisers
- ◆ Subsidy for Solar energy
- ◆ Roof Lease Business Matching Program

### New Buildings

- ◆ Green Building Program
- ◆ Green Label Program for Condominiums
- ◆ Low-carbon prerequisite for Large Developments

### Industrial

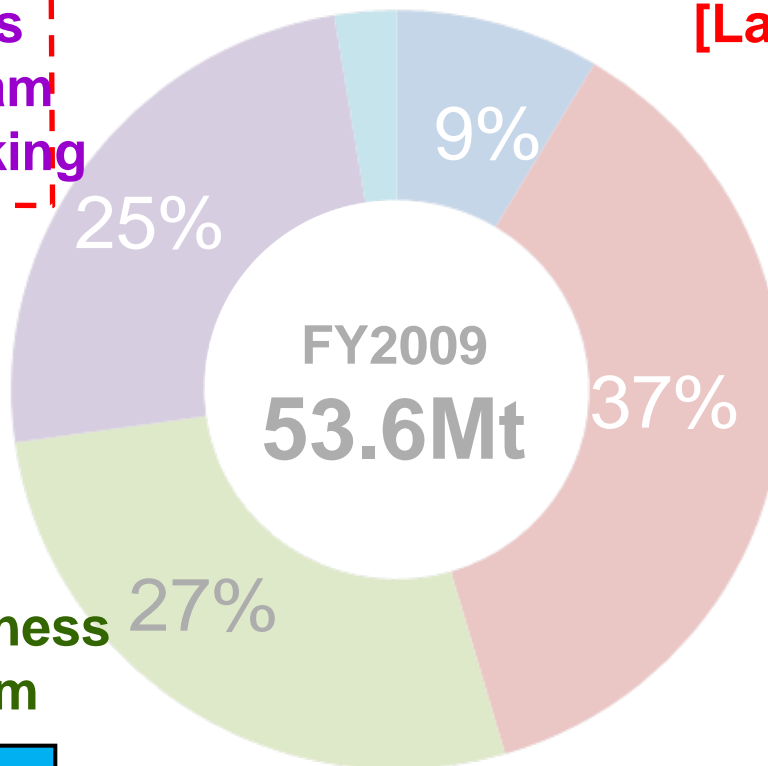
### Commercial

#### [Large Facilities]

- ◆ Carbon Reduction Reporting Program
- ◆ Cap-and-trade

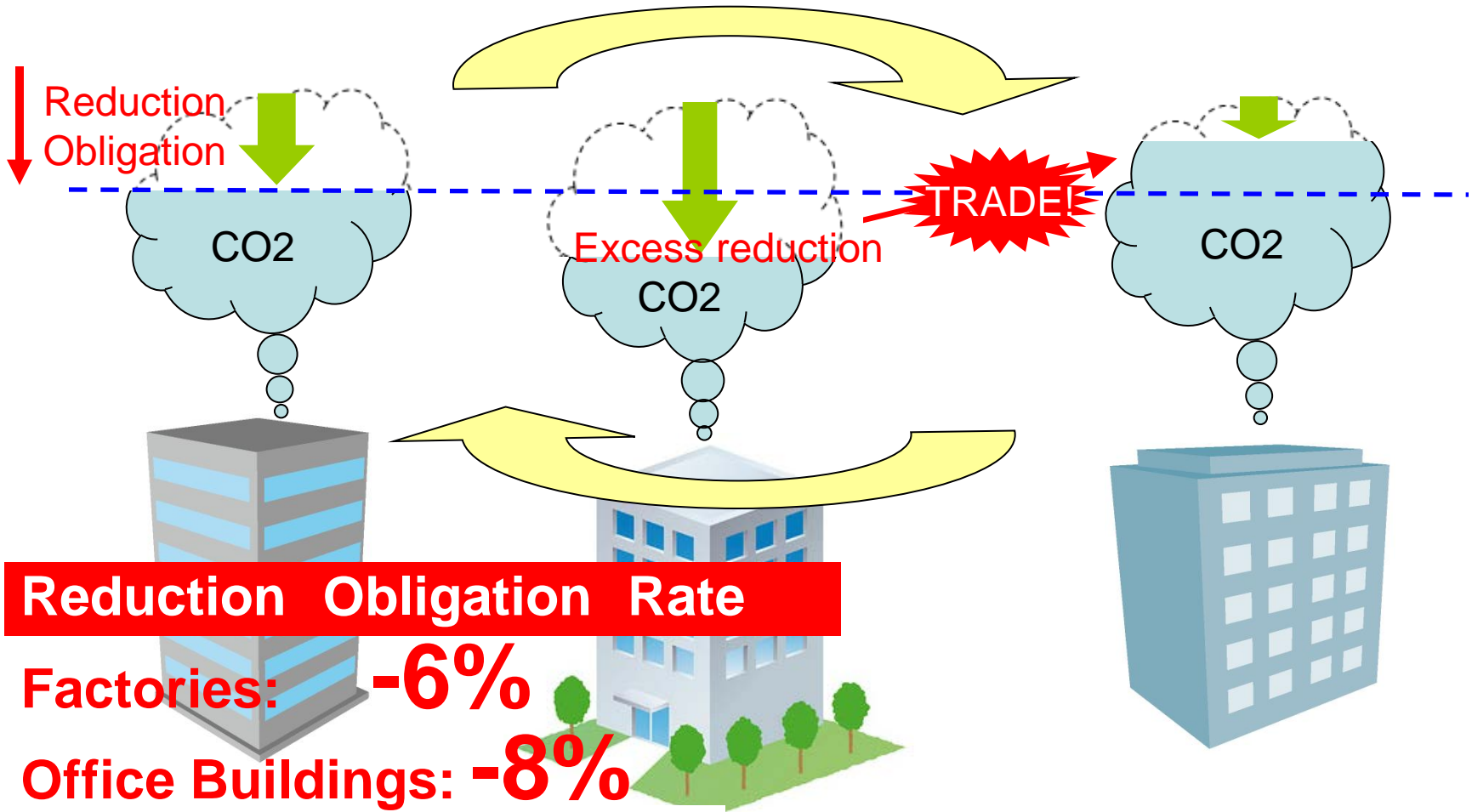
#### [Small & Medium Facilities]

- ◆ Carbon Reduction Reporting Program
- ◆ Subsidy Program for Retrofit
- ◆ Tax Exemption for Retrofit
- ◆ Energy Efficiency Audit & Advise
- ◆ Low-carbon Building Bench-marking



# Tokyo Cap & Trade Program

## Mandatory emission reductions & Emission trading program



# *Green Building Program*

---

## **Rating and Disclosure System to improve environmental performance of new buildings**

**Covered:** Newly planed buildings over 5,000 sq. meters

**Purpose:** To create a real estate market where greener buildings are valued

**Requirement:**

Building owner is required to employ eco-friendly design and to submit a **“Building Environmental Plan”** outlining the building’s environmental performances

**Disclosure:** Plan with rated result with 3 ratings are disclosed on TMG website

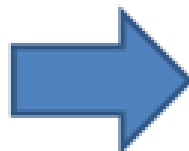
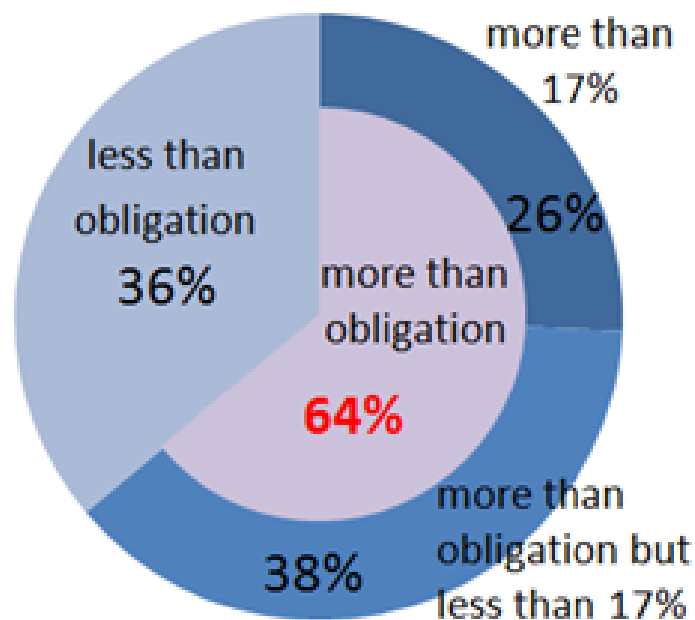


Covers about 40% of new buildings

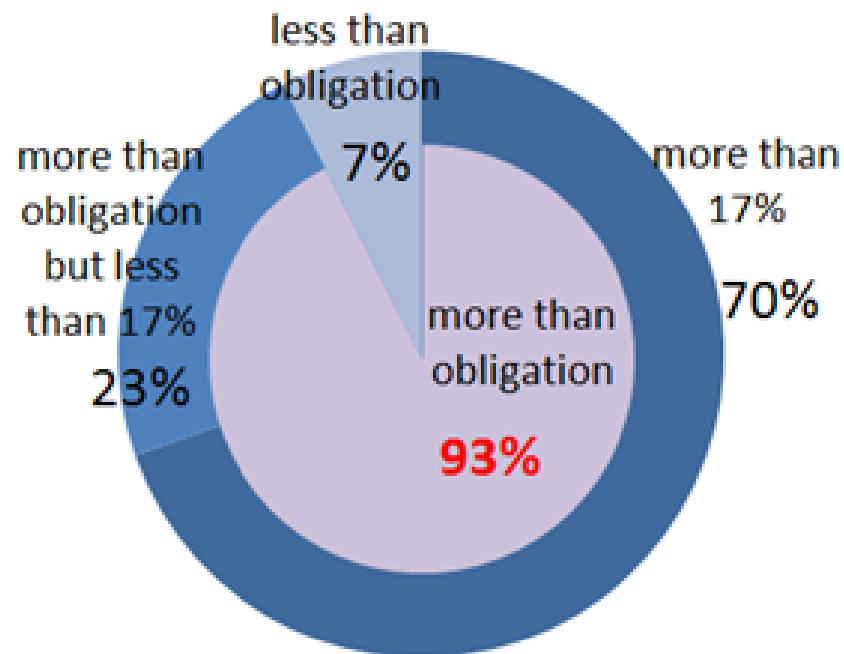
# *The Result of Cap-and-trade Program (2<sup>nd</sup> Year)*

- **23% reduction in total**
- **93% reduced emissions more than obligation**

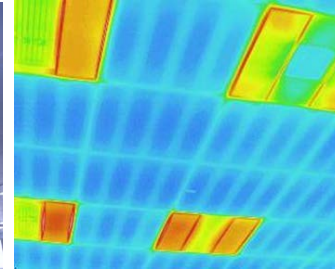
Result of FY2010



Result of FY2011



# Green Building Era in Tokyo



## Low Emission Buildings TOP30

[http://www.kankyo.metro.tokyo.jp/en/int/TOP30\\_English.pdf](http://www.kankyo.metro.tokyo.jp/en/int/TOP30_English.pdf)

# Carbon Reduction Reporting Program

➤ A prior program to Cap-and-Trade (2002-2009)

## ◆ Mandatory Reporting Program

Require a report of 5 year plan for energy reduction with voluntary reduction target

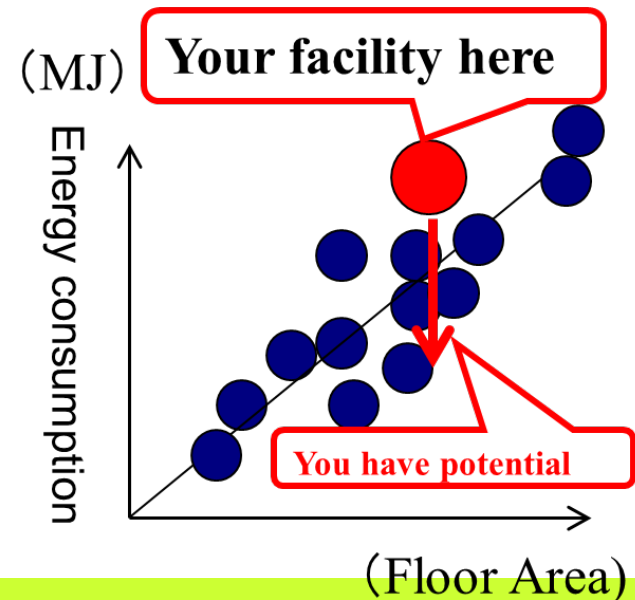
## ◆ Advise, Evaluate & Disclose

Level up the reduction efforts by


- advising,
- evaluating and
- public disclosure

**Easy to introduce**

**Good for collecting data needed for mandatory reduction program**







***Towards low-carbon and environmentally  
sustainable Asian cities,  
Tokyo wishes to share  
experiences***

***Thank you  
For your attention***

***For your further reference;***

***<http://www.kankyo.metro.tokyo.jp/en/climate/index.html>***

***Also visit our facebook page***

***<https://www.facebook.com/Environment.TMG>***

***Email to :Kenji\_1\_Suzuki@member.metro.tokyo***